

# Cassette Fan Coil

+cold

This series of cassette fan coil unit is a four way cassette fan coil unit, with remote controller, built in condensed water pump, which is popular in different buildings.



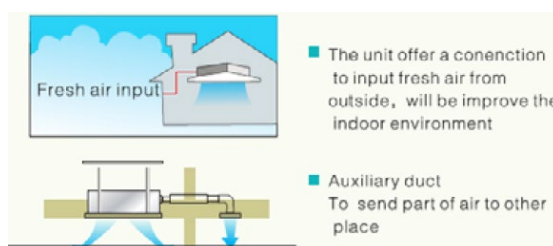
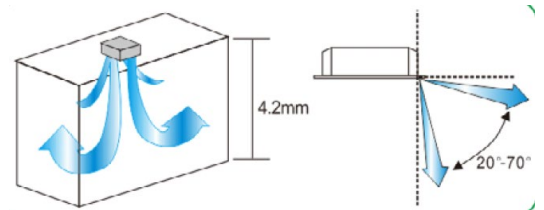
## Features

- 4 Way air flow, even temperature distribution
- Slim body can be installed in limited space ( Minimum thickness is 260mm)
- Remote controller is standard device, wired controller is optional.
- Auto swing
- Quiet running

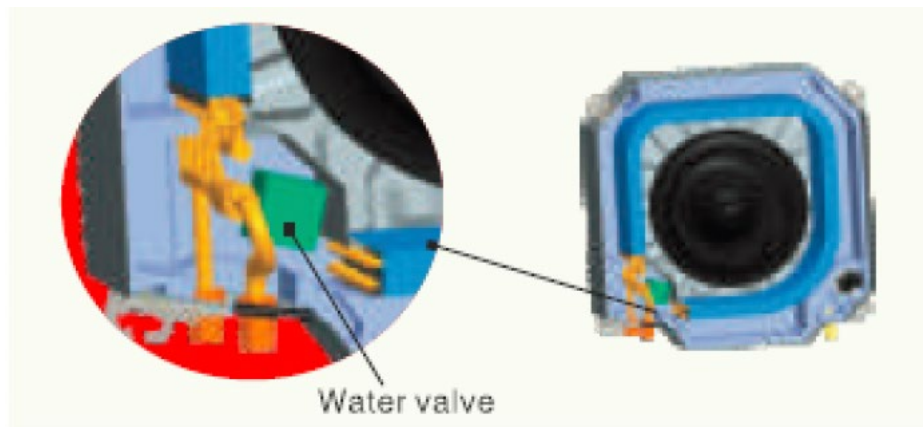
Using advanced 3D software to design the centrifugal fan with stream line and big diameter turbine.

The efficiency of airflow rate, heavy wind volume and low noise is excellent, as the ventilator wheel is processed to sine strip seam, which enhances its flexibility, and drops the vibration of ventilator during revolving in large scale, simultaneously reduced the motor noise caused by ventilator swinging.

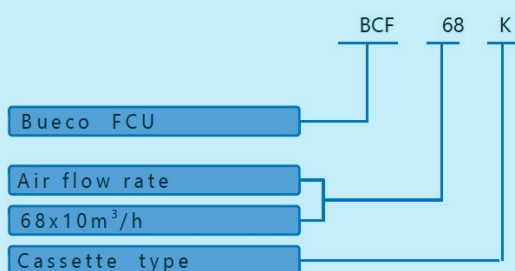
- High lift water drained pump (750mm), easy to plan the condensed water drain pipe.
- Water level switch inside to keep away leakage After the water raising to a certain position, the float switch will act and alarm, then the unit will cut off the water valve or stop the fan motor.
- Fresh air can be input from outside Fresh air inlet can intake some fresh air from outside and ensure the indoor air quality. The user can share the fresh and clean air to lessen illness caused by air conditioner.



- Negative ion generator is optional
- The water remain in the tray is easy to be drained by manual. There is a rubber plug on the tray, dirty water can be drained manually. As the water remained inside of the tray will be kept for long time, it will be very dirty and lots of bacterial inside as well, it's good to drain out the dirty water for healthy and avoid possible pump blocking.
- "C" type heat exchanger, blue hydrophilic fin
- Fan and fan motor is easy to maintain
- After take out the air grid to the panel, the electric box can be easily taken out, as well as fan and fan motor.
- Square panel, the water inlet/outlet connection direction can be chosen freely
- Corner cover design makes installation and maintenance convenient.
- 590\*590mm dimension model, can be installed in a standard ceiling opening.
- Easily interfaced with most widely used Modbus and BMS.
- Water valve can be installed inside of the unit (optional) Water valve is used to control the on/off water flowing to the unit, we install the valve into the unit, so the users do not need to install it by themselves.
- Stainless steel hose can be installed to the unit and act as the inlet/outlet water connection of the unit (Optional) Stainless steel hose is used to reduce the vibration of the water pipe, big vibration may cause pipe broken or leakage, we install the stainless steel hose inside of the unit, so the user do not need to install it again, will reduce the possible leakage as well.
- 4 tubes system is optional There are both cooling and heating water coils inside the unit, so the unit can deal with cooling or heating at the same time.



- DC fan motor is optional
- Optional brushless DC fan motor, high efficiency and energy saving.  
 Panasonic brushless plastic package DC motor is optional.  
 High efficiency, 50% efficiency higher than common fan motor.  
 Long lifetime.  
 The plastic package keeps the moisture and dust away from the interior motor.



### Optional accessories

- Electrical heater
- Water valve
- Stainless steel hose
- 4 tubes design

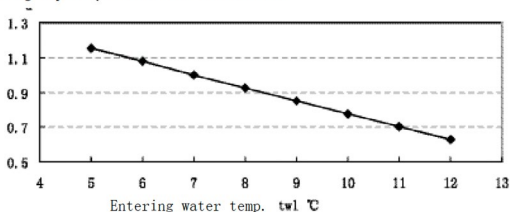
## Specification

Model	Dimension (L*W*H) mm	Cooling capacity BCP068		Heating capacity	Air flow rate BCP136	
		W	TR	W	m3/h	CFM
Cassette FCU, four way, remote controller, built in water level switch, and condensed water pump						
2 pipe						
BCF034K	590*590*242 650*650*40	2000	0.6	3100	380	224
BCF51K	590*590*242 650*650*40	3000	0.9	4700	550	324
BCF68K	590*590*242 650*650*40	3800	1.1	5900	680	400
BCF085K	750*850*242 850*850*40	4900	1.4	7600	880	518
BCF102K	750*850*242 850*850*40	5800	1.6	9000	1050	618
BCF136K	750*750*242 850*850*40	7500	2.1	11600	1380	812
BCF170K	840*840*292 950*950*40	9800	2.8	15200	1750	1029
BCF204K	840*840*292 950*950*40	11000	3.1	17100	2050	1206
BCF238K	840*840*292 950*950*40	12000	3.4	18600	2200	1294
BCF272K	960*960*290 1140*1140*45	15000	4.3	24000	2720	1600
FOB total		One 40' container				
Sea freight						

## Design performance

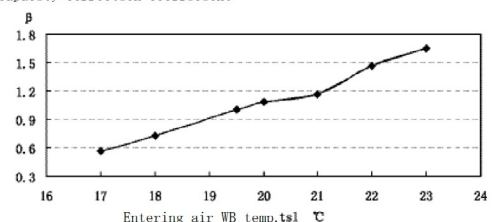
If the entering chilled water temp (tw1)  $\alpha$  changes, the correction coefficient  $\alpha$  changes accordingly as table below

Cooling capacity correction coefficient

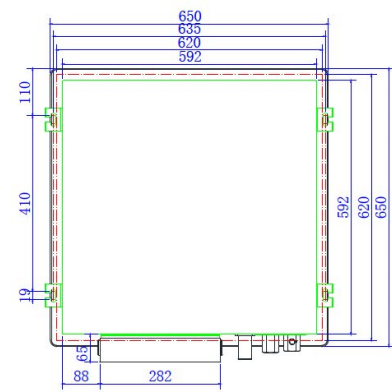
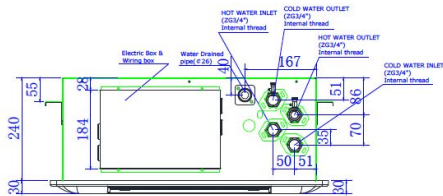


If the entering air WB temp (ts1) changes, the correction coefficient  $\beta$  changes accordingly as table below:

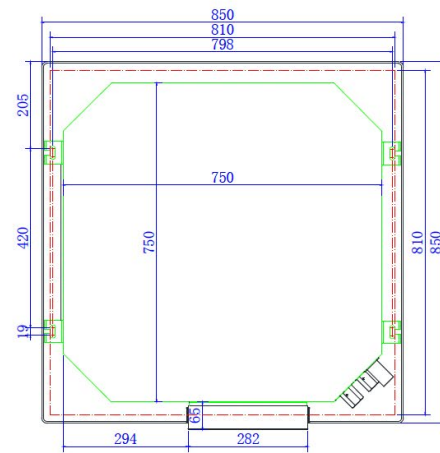
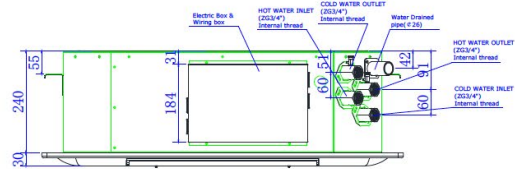
Cooling capacity correction coefficient



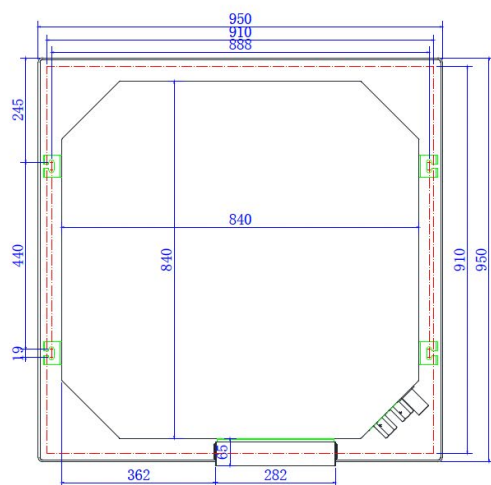
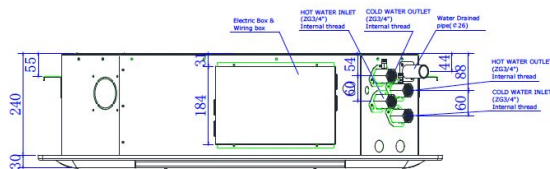
Unit dimension



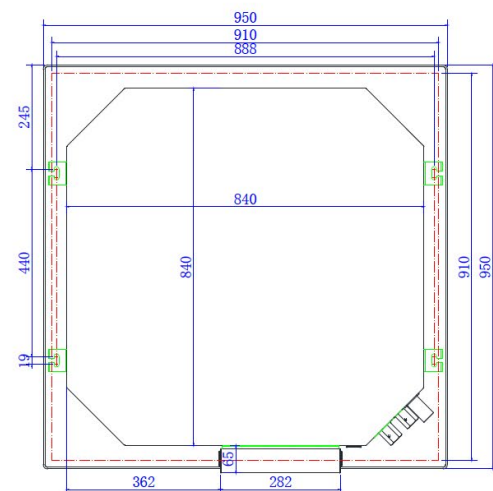
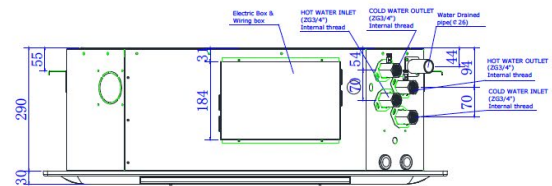
BCF034-K, BCF051-K, BCF068-K



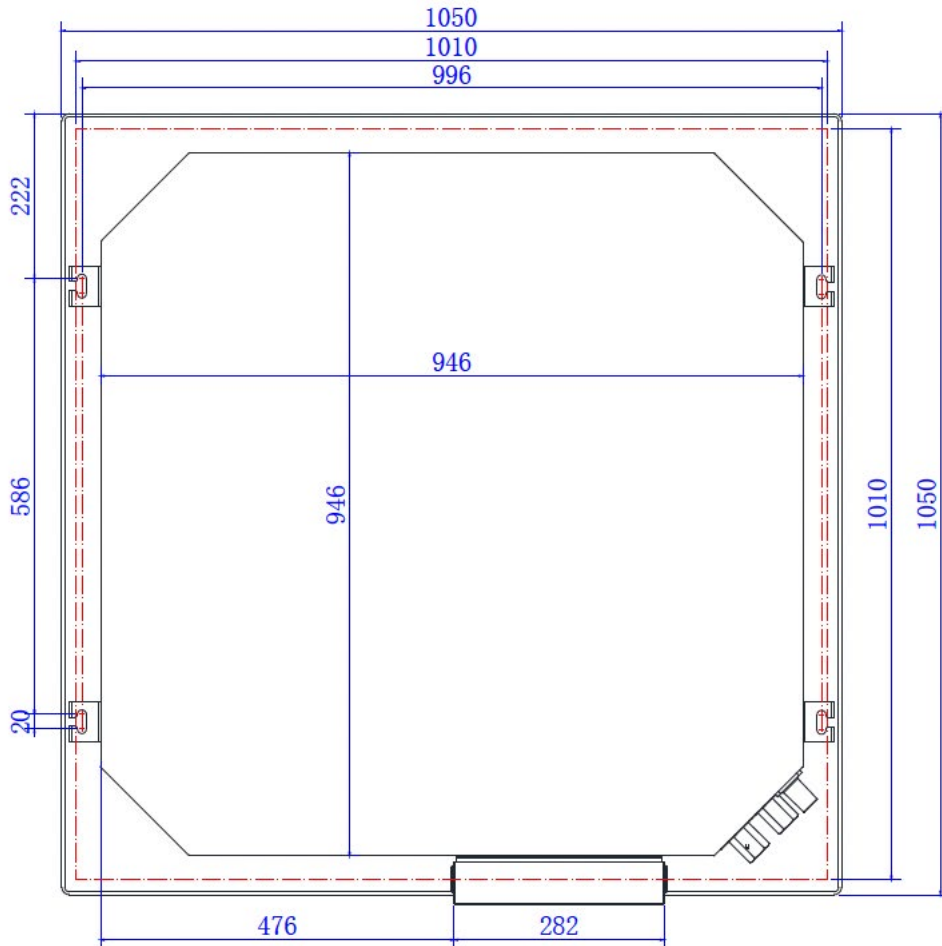
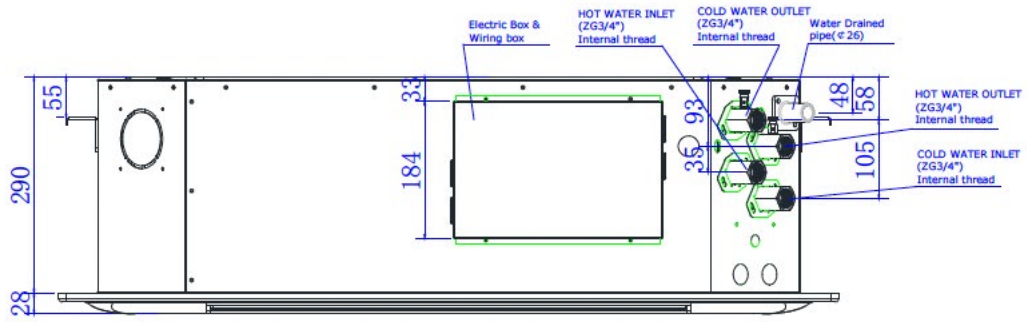
BCF085-K, BCF102-K



BCF136-K



BCF170-K, BCF204-K, BCF238-K



BCF272K